

Trade Name: ASTRO BATT

Fire Resistant Batt

[COSHH Data](#)
[Installation Data](#)
[Product Images](#)
[Installation Video](#)

Fire Resistant Board for sealing service penetrations in walls or floors.

50mm or 60mm thickness batt gives 4 hours fire and smoke barrier and up to 2 hours insulation.

Fire Resistant testing to EN 1366-3 EI 60 E 90, BS 476 - 240mins.

Fire Classification to EN 13501-2.

IET (IEE) 17th Edition Fire Stop Compliant to Regulation 527.1-3 - Electrical Installations.

BS 7671-2008 Chapter 42 & 52 - Electrical Installations Fire Resistance.

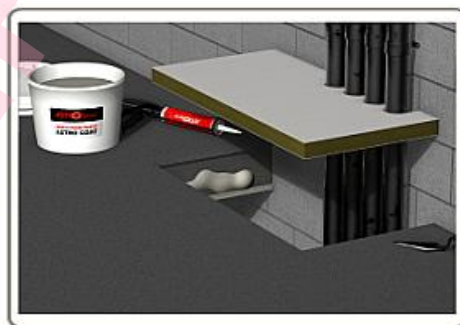
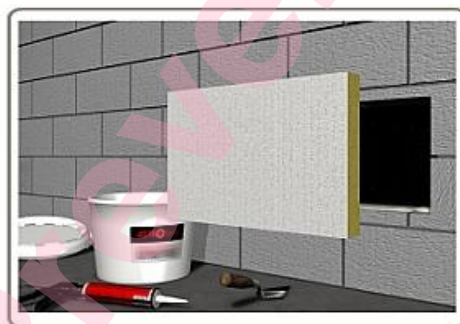
Air Permeability testing to EN 1026 to 600Pa.

Acoustic Isolation testing to EN 10140 to 61dB.

Life expectancy of over 25 years.

Suitable for indoor use without additional environmental protection.

Remains flexible between -5° c to +70° c.



Certifire 3rd Party Accreditation CF614.

Description

Specifically designed for sealing around service penetrations in walls and floors, a single Astroflame board (50mm or 60mm thick) can provide high levels of fire integrity and insulation.

Tested in Block Wall, Concrete, Masonry, Plasterboard Partition, Composite Panel and Durasteel Wall. Tested in Concrete Floors.

Offering up to 4 hours fire resistance in accordance with BS4746: Part 20: 1987. Up to Rw 48dB sound reduction achieved by using two boards.

Astroflame Boards consist of a stone fibre core coated on both sides with Astro Coat which transforms during a fire to prevent the passage of fire and smoke and the transfer of heat.

Unaffected by oil, fungus, moisture, vermin, weather and contains no halogens or asbestos.

ASTRO BATT cut edges or joints should be coated with [ASTRO COAT](#).

If your installation is subject to regular structural movements we stock a [flexible fire rated batt](#) and a [flexible sealant coating](#) designed to accommodate compression and elongation forces.

CE
1121

Astroflame Fireseals Ltd
Unit 8 The I O Centre
Stephenson Road
Segensworth, Fareham
Hampshire, PO15 5RU
14
1121-CPR-JA5026

ETA-14/0099
ETAG 026 – Part 1
ETAG 026 – Part 2
ASTRO BATT



ASTRO COATING
"see ETA-14/0099 for
relevant characteristics"

Properties & Specification

50mm Thickness Batt

Dimensions	1200mm x 600mm x 50mm
Stone Fibre Density	140Kg/m ³
Coating Thickness	1mm Nominal, 2.2kg wet film coating
Fire Resistance	4 hours - BS476 pt20/22; BS EN1366-3; BS EN 1363-1 BS EN13501-2
Insulation (Single Batt)	142 minutes on seal face, EI 60, E 90
Insulation (Double Batts)	264 minutes on seal face
Acoustic Performance	Acoustic Reduction up to 48Rw, 61DnTW (Double 50mm Batt) EN10140 Acoustic Reduction of 24Rw, 38DnTW (Single 50mm Batt) EN10140
Air Permeability	600Pa EN 1026 - 100Pa 1.8/1.4 m ³ /h/m ²
Thermal Conductivity (U Value)	0.034 W/mK at 10° C
Sealant coverage	2.15kg Spread, 2.20kg Spray
Maximum Size of Seal	Wall 5.76m ² , Floor 2.88m ²
Maximum Size - Unsupported	2880 x 1440mm (with services) 1200 x 1200mm (no services)
Maximum Size - Plasterboard	2400 x 1200mm
Maximum Size - Unsupported Floor	1600 x 700mm
Mechanical support	30mm x 30mm x 1.6mm steel angle

60mm Thickness Batt

Dimensions	1200mm x 600mm x 60mm
Stone Fibre Density	160Kg/m ³
Coating Thickness	1mm Nominal, 2.2kg wet film coating
Fire Resistance	4 hours - BS 476 pt20/22 BSEN 1366-3 IMO 754 (18)
Insulation (Single Batt)	120 minutes on seal face
Acoustic Performance	44dB mean reduction up to 62.2dB reduction (with one 60mm Fire Batt). 44dB mean reduction up to 65.4dB reduction (with two 60mm Fire Batt)
Mechanical Support Required	30mm x 30mm x 1.6mm steel angle
Thermal Conductivity (U Value)	0.034 W/mK at 10° C
Sealant coverage	2.15kg Spread, 2.20kg Spray
Maximum Size of Seal	Wall 5.76m ² , Floor 2.88m ²

Maximum Size - Unsupported	1.2m x 0.6m (no services)
Mechanical support 1	30mm x 30mm x 1.6mm steel angle
Heat Aging - 336 hrs	No defects at 40 °C
Water Vapour Permeability	3.08g/m ² /24 hours
Artificial Weathering - 1000 hrs	No defects - BS3900: F3

Availability

BATT : 600mm x 1200mm x 50mm: 140kgm³ density.
 BATT : 600mm x 1200mm x 60mm: 160kgm³ density.

Installation Notes

Use rubber gloves and protection to avoid skin and eye contact.

Cut Batt to suit the opening.

Apply **ASTRO COAT** to cut surface and the mating substrate.

Assemble batt into the opening using as few pieces as possible.

Fill large voids with off cuts of batt.

Close any visible openings with **ASTRO COAT** or **ASTRO MASTIC**.

Should there be a clear opening (no services) greater than 1200mm x 1200mm a steel support system should be used.

Maintain record of installation.

To Order & Specify

Please quote- Quantity / Trade name / Product ref / Description
 Typical wording

20/ ASTROBATT / AFB1200DC50 / 1200x600x50
 20/ ASTROBATT / AFB1200DC60 / 1200x600x60

Fire Test or Assessment Reports

Please refer to the Properties & Specification table above.

Health and Safety

We recommend that dust masks, gloves and eye protection be worn when cutting the boards as the dust produced is an irritant.

Does not emit halogen or other toxic gases when exposed to flame. Normal good industrial and personal hygiene practices should be observed.

Environmental Impact

No Power Tools required for installation (no energy source required).

Dust free.

Low Ozone Depletion Potential (ODP).

Low Global Warming Potential (GWP).

Smoke and Air Tightness.

Noise Reduction.

Thermal Insulation.

Recycling of Packaging.

Avoidance of Air Filtration.

Core being manufactured in accordance with ISO14001.

The life cycle of Fire Batts is over 25 years.

As part of our policy of ongoing improvements, we reserve the right to modify, alter or change product specifications without giving notice. Product illustrations are representations only. All information contained in this document is provided for guidance only, and as ASTROFLAME FIRESEALS LTD has no control over the installation methods of the products, or of the prevailing site conditions, no warranties expressed or implied are intended to be given as to the actual performance of the products mentioned or referred to, and no liability whatsoever will be accepted for any loss, damage or injury arising from the use of the information given of products mentioned or referred to herein.

The above information to the best of our knowledge is true and accurate and based upon current test data and is supplied for your guidance only. Customers should satisfy themselves to the suitability of the product in its intended use and no guarantee is given or implied since the conditions of actual use are beyond our control.

ASTROflame (Fireseals) Ltd, disclaim any liability for loss, damage or other expense arising from the use of information, data or products mentioned or referred to and reserve the right to change any details or specifications without notice.



www.BrandPrevent.nl